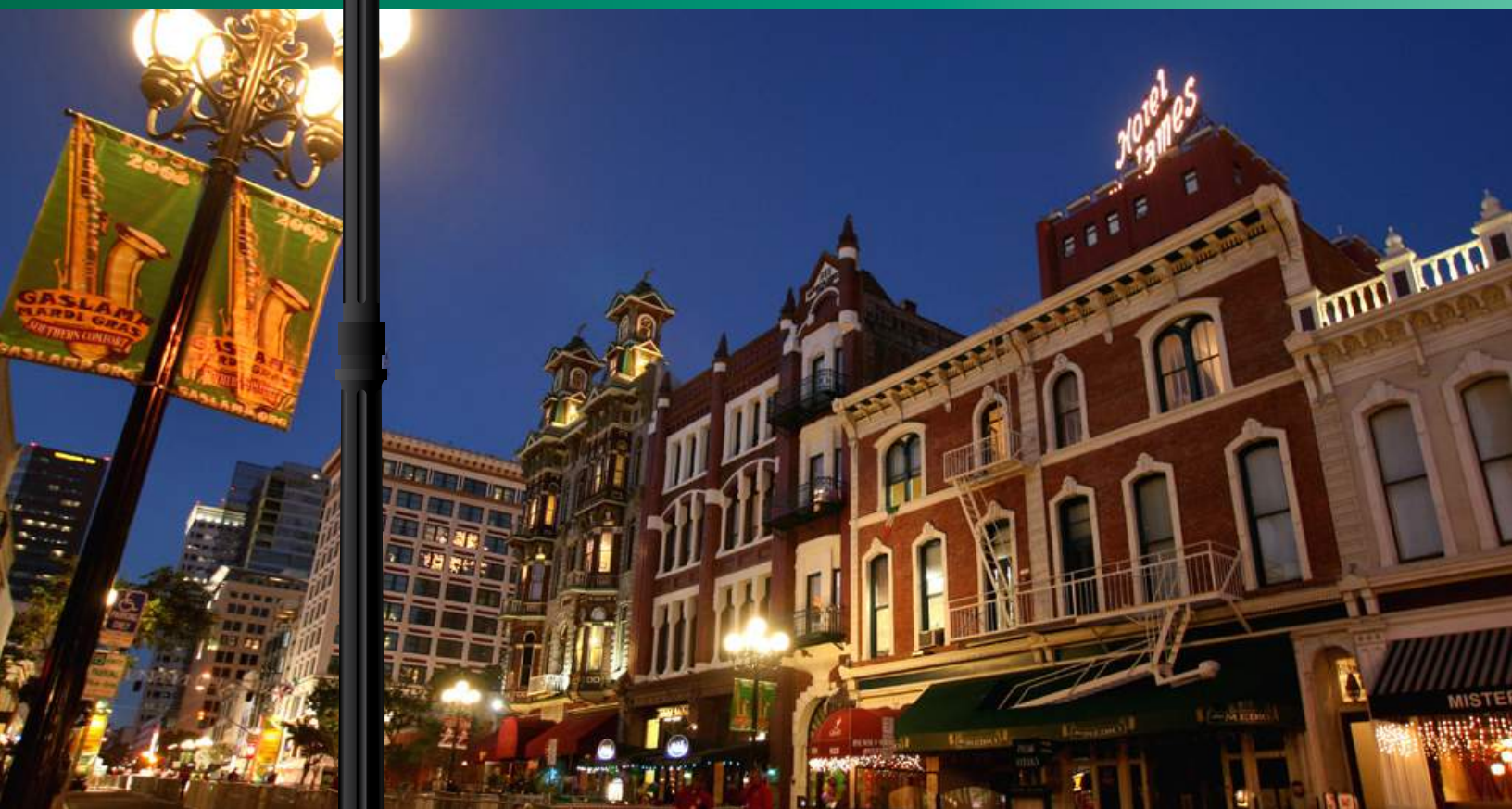




FOCiS[®] 2015

San Diego California
Immunology by the Bay June 24-27, 2015



Scientific Program

80% of our
development
projects are
biologics

9 high-potential
projects are in late-stage*

\$6.5 bn
of investment in R&D
in 2013

More than
110,000
employees in 100
countries

© Palani Mohan

Dean, Australia,
with multiple sclerosis

EXPLORING THE BOUNDARIES OF MEDICAL INNOVATION

Sanofi has created an open innovation model based on solid collaborations with its partners and the scientific community. With this new R&D approach, Sanofi can meet its main challenges: accelerating the transformation of scientific innovation into targeted therapeutic solutions for patients, and developing new biologic entities.

*As of february 6, 2014

US.COR.14.06.006



For more information: www.sanofi.com - www.sanofi.us

www.facebook.com/sanofiUS  www.twitter.com/sanofiUS  www.pinterest.com/sanofiUS  blog.sanofi.us

Dear Colleagues,


Welcome to the 15th annual meeting of the Federation of Clinical Immunology Societies, FOCIS 2015. I am particularly excited about this year's meeting. The scientific program reflects the core tenets of FOCIS by bridging the gap between basic and clinical immunology and discussing novel translational therapies.

We value the participation of each of you who have touched FOCIS in one way or another over the past 15 years, and we hope that you will join us as we move into the future. FOCIS introduced individual membership in 2012, and I invite you to join FOCIS and collaborate with us to promote education, research and patient care around the theme of translational immunology. Memberships run on a calendar year basis and are available at reasonable prices. At FOCIS 2015 they also gain you exclusive access to a Members Only Lounge complete with an espresso bar as well as a hip Members Only Reception at the Pool Club on Thursday, June 25.


Please join me in extending my most heartfelt thanks to the members of the FOCIS 2015 Scientific Program Committee for their time, energy and expertise. I hope you enjoy the fruits of their labor: FOCIS 2015. Welcome to San Diego!



Robert Nussenblatt, MD
FOCIS President



FOCIS 2015 Mobile App bit.ly/SrN4mx



Access the Scientific Program, Educational Courses, Abstracts and create a personalized schedule from your computer, tablet or smartphone.

FOCIS 2015 Supporters

Acknowledgements

FOCIS gratefully acknowledges the support that allows FOCIS to fulfill its mission to foster interdisciplinary approaches to both understand and treat immune-based diseases, and ultimately to improve human health through immunology.



FOCIS 2015 Scientific Program Committee



Mark Anderson, MD, PhD
University of California, San Francisco
Chair



Kevan Herold, MD
Yale University
Co-Chair



Ciriaco Piccirillo, PhD
McGill University
Abstract Co-Chair



Terri Laufer, MD
University of Pennsylvania
Abstract Co-Chair



Robert Nussenblatt, MD
National Eye Institute



Frank Nestle, MD
King's College London



Matthew Albert, MD, PhD
Institut Pasteur



Elaine Reed, PhD
University of California, Los Angeles



Tim Niewold, MD
Mayo Clinic

Continuing Medical Education (CME)

This activity has been planned and implemented in accordance with the Essential Areas and Policies of the Accreditation Council for Continuing Medical Education through the Federation of Clinical Immunology Societies. The Federation of Clinical Immunology Societies is accredited by the Accreditation Council for Continuing Medical Education to provide continuing medical education credits for physicians.

The Federation of Clinical Immunology Societies designates this live activity for a maximum of 15.25 *AMA PRA Category 1 Credits™*. Physicians should claim only the credit commensurate with the extent of their participation in the activity.

FOCIS 2015 General Information

Exhibit Hall Hours

Wednesday, June 24	4:00 pm - 8:15 pm
Thursday, June 25	7:30 am - 7:30 pm
Friday, June 26	7:30 am - 7:30 pm

Poster Hall Hours

Wednesday, June 24	6:15 pm - 8:15 pm
Thursday, June 25	6:15 pm - 7:30 pm
Friday, June 26	6:15 pm - 7:30 pm

Poster Set-Up and Take-Down Hours

Wednesday, June 24	Set-up:	12:00 pm - 12:45 pm
	Take-down:	8:15 pm - 9:00 pm
Thursday, June 25	Set-up:	7:00 pm - 8:00 am
	Take-down:	7:30 pm - 8:00 pm
Friday, June 26	Set-up:	7:00 pm - 8:00 am
	Take-down:	7:30 pm - 8:00 pm

Registration and Speaker Check-In Hours

Tuesday, June 23	7:00 am - 5:30 pm
Wednesday, June 24	7:00 am - 5:30 pm
Thursday, June 25	7:00 am - 5:30 pm
Friday, June 26	7:00 am - 5:30 pm

Evaluations / Pre-Post Tests

Daily online evaluations are available at focisnet.org in the FOCIS 2015 section of the website. Delegates will also receive an email reminder and link to the online system daily during the meeting. Delegates are asked to complete an evaluation for each session attended, as well as the post-test following the meeting.

CME Certificates and Certificates of Attendance

Certificates are made available to delegates who complete the post-test and evaluation.

Speakers

Speakers are asked to report to speaker check-in area located in the Green Room on Sapphire Level (4th floor) of the Hilton San Diego Bayfront at least 24 hours prior to the start of their session. Computers will be available for review and upload of presentations.

Photo Policy

Please refrain from photography in the sessions and poster hall.

Release

Registration and attendance at, or participation in, FOCIS meetings and other activities constitutes an agreement by the registrant to FOCIS' use and distribution (both now and in the future) of the registrant or attendee's image or voice in photographs, videotapes, electronic reproductions and audio tapes of such events and activities.

*Experience and progress –
a unique and accurate outlook on skin diseases*

Dermatology

Editor-in-Chief

J.-H. Saurat, Geneva

Deputy Editor

D. Lipsker, Strasbourg

Associate Editors

G. Argenziano, Naples
M. Augustin, Hamburg
W.H. Boehncke, Geneva
L. Borradori, Bern
R.P. Braun, Zürich
R. Cerio, London
L. Cerroni, Graz
O. Chosidow, Paris
A. Dupuy, Rennes
J.W. Fluhr, Berlin

L. French, Zürich
F. Furukawa, Wakayama
M. Gilliet, Lausanne
A.K. Gupta, London, Ont.
R. Happle, Freiburg
R.J. Hay, London
P. Itin, Basel
G. Kaya, Geneva
R.G.B. Langley, Halifax, N.S.
J.M. Mascaro, Jr., Barcelona
K. Matsunaga, Nagoya
L. Naldi, Bergamo
F. Nestle, London
C. Paul, Toulouse
T. Shiohara, Tokyo
Th. Simonart, Brussels

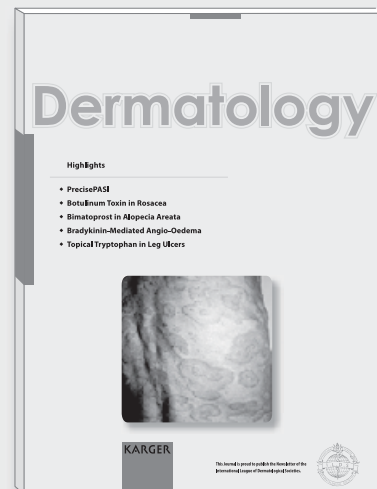
H.P. Soyer, Brisbane, Qld.

L. Thomas, Lyon

R.M. Trueb, Wallisellen

T.J. Yoon, Jinju

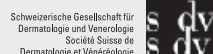
Ch.C. Zouboulis, Dessau



Official Organ of the



Swiss Society for Dermatology and Venereology



European
Dermato-Epidemiology
Network (EDEN)
Epidemiology, Health Care Research and
Evidence-Based Dermatology Section

Also includes newsletters and papers from the



International League of
Dermatological Societies
(ILDS)

Published since 1893, *Dermatology* provides a worldwide survey of clinical and investigative dermatology. Original papers report clinical and laboratory findings. In order to inform readers of the implications of recent research, editorials and reviews prepared by invited, internationally recognized scientists are regularly featured. In addition to original papers, the journal publishes rapid communications, short communications, and letters to *Dermatology*. *Dermatology* answers the complete information needs of practitioners concerned with progress in research related to skin, clinical dermatology and therapy. The journal enjoys a high scientific reputation with a continually increasing impact factor and an equally high circulation.

Dermatology

Founded: 1893

Category: Clinical Research

Field of Interest: Dermatology

Listed in bibliographic services, including
Current Contents®, Pubmed/MEDLINE,
Excerpta Medica, Biological Abstracts

2015: Volumes 230, 231

4 issues per volume

Language: English

ISSN 1018-8665

e-ISSN 1421-9832

Selected contributions

- **Dermoscopy of Acral Melanoma: A Multicenter Study on Behalf of the International Dermoscopy Society:** Braun, R.P. (Zürich); Thomas, L. (Lyon); Dusza, S.W. (New York, N.Y.); Gaide, O. (Lausanne); Menzies, S. (Camperdown, N.S.W./Sydney, N.S.W.); Blum, A. (Konstanz); Argenziano, G. (Reggio Emilia); Zalaudek, I. (Reggio Emilia/Graz); Kopf, A. (New York, N.Y.); Rabinovitz, H.; Oliviero, M. (Plantation, Fla./Miami/Fla.); Perrinaud, A. (Tours); Cabo, H. (Buenos Aires); Pizzichetta, M. (Aviano); Pozo, L. (London); Langford, D. (Christchurch); Tanaka, M. (Tokyo); Saida, T. (Matsumoto); Perusquia Ortiz, A.M. (Münster); Kreusch, J. (Lübeck); De Giorgi, V. (Florence); Piccolo, D. (L'Aquila); Grichnik, J.M. (Miami, Fla.); Kittler, H. (Vienna); Puig, S.; Malvehy, J. (Barcelona); Seidenari, S. (Modena); Staganelli, I. (Meldola); French, L. (Zürich); Marghoob, A.A. (New York, N.Y.)
- **Comorbidities Associated with Vitiligo: A Ten-Year Retrospective Study:** Sheth, V.M.; Guo, Y.; Qureshi, A.A. (Boston, Mass.)
- **Efficacy of Fractional Microneedle Radiofrequency Device in the Treatment of Primary Axillary Hyperhidrosis: A Pilot Study:** Kim, M.; Shin, J.Y.; Lee, J.; Kim, J.Y.; Oh, S.H. (Seoul)
- **The Potential Depigmenting Activity of Retinaldehyde:** Sorg, O.; Kasraee, B.; Salomon, D.; Saurat, J.-H. (Geneva)
- **Association of HSD17B3 and HSD3B1 Polymorphisms with Acne Vulgaris in Southwestern Han Chinese:** Yang, X.-Y.; Wu, W.-J. (Kunming); Yang, C.; Yang, T.; He, J.-D.; Yang, Z.; He, L. (Kunming)
- **Comparison of Interleukin-17-Producing Cells in Different Clinical Types of Alopecia Areata:** Tojo, G.; Fujimura, T.; Kawano, M.; Ogasawara, K.; Kambayashi, Y.; Furudate, S.; Mizuashi, M.; Aiba, S. (Sendai)
- **Potential Use of Optical Coherence Tomography and High-Frequency Ultrasound for the Assessment of Nail Disease in Psoriasis and Psoriatic Arthritis:** Aydin, S.Z. (Istanbul); Castillo-Gallego, C. (Madrid); Ash, Z.R.; Abignano, G.; Marzo-Ortega, H.; Wittmann, M.; Del Galdo, F.; McGonagle, D. (Leeds)
- **Clonal Mast Cell Proliferation in Pruriginous Skin in Hypereosinophilic Syndrome:** Wiednig, M.; Beham-Schmid, C.; Kranzelbinder, B.; Aberer, E. (Graz)

More information at www.karger.com/drm



HARVARD

MEDICAL SCHOOL

MASTER OF MEDICAL SCIENCES IN IMMUNOLOGY

MISSION

The mission of the HMS Master of Medical Sciences in Immunology (MMSc IMM) is to provide a solid, instructional and research-based foundation in both Basic and Clinical Immunology. Courses will start with the fundamentals and rapidly progress to cutting-edge knowledge, all taught by world-renowned faculty members in the Program in Immunology at Harvard. This program will serve the needs both of students with a strong undergraduate biology background with an interest in medicine and seeking deeper knowledge of immunology, as well as those of academic physicians from a range of specialties who seek an in-depth knowledge of Immunology in order to further their professional goals and research expertise.

PROGRAM DESCRIPTION

The HMS MMSc IMM is a two-year program with two primary goals:

1. To give students a solid foundation in Basic and Clinical Immunology in order to better understand how a new revolution is currently occurring in the treatment of numerous diseases and conditions including immunodeficiencies, allergies, chronic inflammatory diseases, transplantation and cancer.
2. To provide students with comprehensive tools and protected time to engage in mentored research on important issues in either Basic or Clinical Immunology depending on their inclinations. This will entail working with leading Harvard faculty and will cumulate in a Master's Thesis.

ELIGIBILITY

The HMS MMSc IMM is open to individuals with a Bachelor's degree with a strong background in biology and an interest in Immunology, Medicine, or Biomedical research, as well as to individuals who already possess a medical degree, such as an MD, a DO or an MBBS, or to individuals who have a degree in a health professions-related field.

CREDIT REQUIREMENTS

Students must earn 64 credits, generally meeting the requirements with 32 credits of course work and 32 credits of mentored research.

CURRICULUM:

Year one:

- Molecular and Cellular Immunology at Harvard College
- Principles of Immunology at Harvard Medical School
- Advanced Principles of Immunology at Harvard Medical School
- Methods in Basic and Clinical Immunology at Harvard Medical School (for MMSc IMM students only)
- Longitudinal Seminar Course (for MMSc IMM students only)
- 1 or 2 elective courses (4 credits)

The foundational research work will begin in the spring semester of the first year and continue until completion.

Year two:

Students will primarily be devoted to:

- Completing their mentored research
- Analyzing their data
- Writing their results and defending their thesis

For all students, the mentored research experience will comprise 32 credits.!!

HOW TO APPLY



The application cycle for Fall 2016 will open in November 2015. Applicants must submit a letter of intent, no more than 3 pages in length, describing their interest in the program and their qualifications. In addition, we also require a CV, official transcript(s) and three letters of recommendation. Students with a BS or BA must submit either MCAT or GRE scores. The TOEFL is required for graduates for whom English was not the method of instruction.

For more information, email mmsc_imm@hms.harvard.edu or visit <http://mmscimmunology.hms.harvard.edu>

FOCIS 2015 Scientific Program

Tuesday, June 23rd


7:00 pm – 5:30 pm
8:00 pm – 4:30 pm
8:30 am – 5:00 pm

Registration Open
Computational Immunology Course (separate registration required) 
Basic Immunology in Medicine: Update 2015 (separate registration required) 

Sapphire West Foyer
Sapphire I
Sapphire M

Wednesday, June 24th

7:00 am – 5:30 pm
8:00 am – 12:00 pm
4:00 pm – 5:15 pm

Registration Open
Interventional Immunology Course (separate registration required) 
FCE Fusion: Careers, Connections, Collaborations (invitation only)

Sapphire West Foyer
Aqua C
Aqua EF

Member Society Symposia (included in FOCIS 2015 registration) CME not available through FOCIS

8:00 am – 11:15 pm

Advances in Adoptive Cellular Therapies for Treatment of Cancers and Pathogens

Sapphire P

Organized by the American Society for Blood and Marrow Transplantation (ASBMT)

8:00 am – 8:45 am

Challenges and Opportunities for Therapy with Genetically Modified T Cells

– Stanley Riddell, MD, University of Washington

8:45 am – 9:30 am

CARs and Armored CARs – *Renier Brentjens, MD, Sloan-Kettering Cancer Center*

9:30 am – 9:45 am

Coffee Break

9:45 am – 10:30 am

Chimeric Antigen Receptor T Cells for Treating Hematologic Malignancies – *James Kochenderfer, MD, National Cancer Institute*

10:30 am – 11:15 am

Virus Specific T Cells: Broadening Applicability – *Catherine Bollard, MD, Children's Research Institute*

8:00 am – 12:00 pm

CNS Autoimmune Disease and the Innate Immune System: Novel Roles of Pro-inflammatory and Regulatory Myeloid Cells

Sapphire I

– Organized by Americas Committee for Treatment and Research in Multiple Sclerosis (ACTRIMS)

8:00 am – 8:05 am

Opening Remarks, Session Chair – *Benjamin M. Segal, MD, University of Michigan*

8:05 am – 8:30 am

Neutrophil Interactions at the Blood-brain Interface in Neuroinflammation – *Luc Vallieres, PhD, Hopitalier Université Laval*

8:30 am – 9:00 am

Neutrophil Attracting CXC Chemokines and G-CSF in EAE and MS Pathogenesis – *Julie Rumble, PhD, University of Michigan*

9:00 am – 9:30 am

Mast Cell T Cell Interactions in the Meninges Amplify T Cell Encephalitogenicity – *Melissa Brown, PhD, Northwestern University*

9:30 am – 10:00 am

SOCS3/STAT3 Axis in Myeloid Cells Regulates Neuroinflammation – *Etty Benveniste, PhD, University of Alabama*

10:00 am – 10:15 am

Coffee Break

10:15 am – 10:45 am

Polarization Properties of Human Myeloid Cell Populations – *Jack Antel, MD, McGill University*

10:45 am – 11:15 am

The Role of Different Antigen Presenting Cells in Autoimmune Demyelination – *Air Waisman, PhD, Johannes Gutenberg-University Mainz*

11:15 am – 11:45 am

Microglia and Macrophages in Remyelination – *Veronique Miron, PhD, University of Edinburgh*

11:45 am – 12:00 pm

Closing Remarks

8:00 am – 12:00 pm

Tumor Immune Editing and Immune Tolerance – *Organized by the FOCIS Cancer Community of Practice*

Sapphire 410

8:00 am – 8:20 am

Opening Remarks

8:20 am – 8:40 am

Augmenting T Cell Therapy with IL-2 and IL-5 – *Mark Rubenstein, MD, University of South Carolina*

8:45 am – 9:05 am

Combination Immunotherapy: Anti-OX40, Anti-CTLA-4 and Beyond – *William Redmond, PhD, Earle A. Chiles Research Institute*

9:10 am – 9:30 am

Dual Antigen Targeted Immunotherapy for Prostate Cancer: Preclinical Evaluation – *Karen Day, PhD, University of South Carolina*

9:30 am – 10:30 am

Coffee Break

10:30 am – 10:45 am

4-1BB Against Antibodies: Making the 'Therapeutic' Cancer Vaccine Curative – *Michael A. Curran, PhD, University of Texas*

Wednesday, June 24th (cont.)

10:45 am – 11:00 am	NK Cells Targeting Cancer Stem Cells – <i>Anahid Jewett, PhD, University of California, Los Angeles</i>
11:05 am – 11:25 am	Targeting Soluble NKG2D Ligands in Cancer – <i>Jennifer Wu, PhD, University of South Carolina</i>
11:30 am – 11:50 am	VISTA: The Emerging T Cell Check Point in Cancer Immunotherapy – <i>Lily Wang, PhD, Medical College of Wisconsin</i>
11:50 am – 12:00 pm	Discussion and Closing Remarks

8:00 am – 12:00 pm

Chronic Rhinosinusitis: An Evolving Understanding of Chronic Mucosal Inflammatory Disease – *Organized by the American Rhinologic Society (ARS)*

Sapphire 400

8:00 am – 8:15 am

Introduction of CRS and CRS Subtypes – *Amber Luong, MD, PhD, University of Texas Medical School at Houston*


8:15 am – 8:40 am

P-glycoprotein in Epithelial Cell Function – *Ben Bleier, MD, Massachusetts Eye and Ear Infirmary*

8:40 am – 9:05 am

Mucosal B Cell and Antibody Derangements in CRS – *Bruce Tan, Northwestern University*

9:05 am – 9:30 am

Role of Microbiome in Pathophysiology of CRS – *Jay Pinto, MD, University of Chicago*

9:30 am – 9:50 am

Coffee Break

9:50 am – 10:15 am

Bitter Taste Receptors and their Role in CRS – *Noam Cohen, MD, PhD, University of Pennsylvania*

10:15 am – 10:40 am

The Good and the Bad of the Type 2 Response in CRS – *Amber Luong, MD, PhD, University of Texas Medical School at Houston*

10:40 am – 11:05 am

TSLP and Type 2 Inflammation in CRS – *Atsushi Kato, PhD, Northwestern University*

11:05 am – 11:30 am

The Big Picture – *Bob Schleimer, PhD, Northwestern University*

11:30 am – 12:00 pm

Panel Discussion and Summary

8:00 am – 12:00 pm

Bioengineering of Organs for Transplantation – *Organized by The Transplantation Society (TTS) and the American Society for Histocompatibility and Immunogenetics (ASHI)*

Sapphire M

8:00 am – 8:45 am

Engineering the Human Thymic Environment to Generate and Modulate T Cells


– *Gay Crooks, MBBS, University of California, Los Angeles*

8:45 am – 9:30 am

Current Progress in Islet Cell Transplantation – *Ron G. Gill, PhD, University of Colorado, Denver*


9:30 am – 9:45 am

Coffee Break

9:45 am – 10:30 am

Novel Perfusion Methods Repair Organs *ex-vivo* – *Stefan Tullius, MD, PhD, Brigham and Women's Hospital*

10:30 am – 11:15 am

Biomaterial Interactions – *Stephen Badylak, MD, University of Pittsburgh*

11:15 am – 12:00 pm

Optimizing Bone Marrow Transplantation for Tolerance – *Suzanne T. Ildstad, MD, Regenerex, LLC.*

1:00 pm – 5:00 pm

Clinical Trials for Immunologic Disease Course (separate registration required)



Aqua C

12:45 pm – 3:00 pm

Lupus Insight Prize Session – *Organized by the Alliance for Lupus Research, Lupus Foundation of America & the Lupus Research Institute*

Aqua AB



12:45 pm – 4:40 pm

The Next Generation of Emerging Technologies to Assess the Immune Response – *Organized by the Association of Medical Laboratory Immunologists (AMLI) and the American Society for Histocompatibility and Immunogenetics (ASHI)*

Sapphire I

12:45 pm – 12:55 pm

Introductions – *Barbara Detrick, PhD, Johns Hopkins University*

12:55 pm – 1:40 pm

Overview: Variable NK Cell Receptors and their MHC Class I Ligands in Immunity, Reproduction and Human Evolution – *Peter Parham, PhD, Stanford University*


1:40 pm – 2:25 pm

Systems Approaches to the Autoimmune Diseases – *Virginia Pascual, MD, Baylor Institute for Immunology Research*


2:25 pm – 3:10 pm

Next Generation Sequencing: Applications for Microbiome and IBD – *Jonathan Braun, MD, PhD, University of California, Los Angeles*

3:10 pm – 3:55 pm

HLA Typing by Next Generation Sequencing and Translation to the Clinic – *Jennifer Zhang, PhD, University of California, Los Angeles*

Wednesday, June 24th (cont.)

3:55 pm – 4:40 pm The Genetics and Genomics of the Immune Response – *Daniel Geraghty, PhD, Fred Hutchinson Cancer Research Center*

12:45 pm – 4:45 pm IL-23 and Spondyloarthritis Related Disease – *Organized by the American College of Rheumatology (ACR)*

12:45 pm – 12:50 pm Introduction – *Gregg J. Silverman, MD, New York University*

12:50 pm – 2:00 pm HLA-B27 and IL-23 Related Spondyloarthritis Conditions in Adults – *Philip J. Mease, MD, Swedish Medical Center, University of Washington and Atul A. Deodhar, MD, MRCP - Oregon Health and Sciences University*

2:00 pm – 2:35 pm Pediatric Spondyloarthritis, HLA-B27 and ERAP1 – *Robert Colbert, MD, PhD, National Institute of Health*

2:35 pm – 2:55 pm **Coffee Break**

2:55 pm – 3:20 pm Pathogenesis from MRI of Spondyloarthropathies – *Walter Maksymowych, MD, University of Alberta*

3:20 pm – 3:50 pm IL-23 Biology and Enthesopathies – *Daniel Cua, PhD, Merck*

3:50 pm – 4:25 pm T Cell IL-23 and Skin Autoimmune Diseases – *Anna Di Nardo, MD, PhD, University of California, San Diego*

4:25 pm – 4:45 pm Question & Answer

Sapphire P



12:45 pm – 4:45 pm Cytokines in Human Disease – *Organized by the International Cytokine and Interferon Society (ICIS)*

12:45 pm – 1:45 pm Targeting the IL-23 Immune Exists for Treatment of Autoimmunity – *Daniel Cua, PhD, Merck Research Laboratories*

1:45 pm – 2:30 pm The Biology of Interleukin-6 and Strategies of Therapeutic Blockade – *Stefan Rose-John, PhD, University of Kiel*

2:30 pm – 2:45 pm **Coffee Break**

2:45 pm – 3:45 pm The Inflammasome and Auto Inflammation: It's Not All About IL-1 – *Hal Hoffman, MD, University of California, San Diego*

3:45 pm – 4:45 pm When Jakinibs Meet Superenhancers – *John O'Shea, MD, NIAMS, National Institutes of Health*

Sapphire M



1:00 pm – 5:00 pm Immunology Town Hall – *Organized by the FOCIS Immunology Community of Practice*

1:00 pm – 1:45 pm T Follicular Helper Cells in Human Autoimmunity – *Hide Ueno, MD, PhD, Baylor University*

1:45 pm – 2:30 pm Lupus B Cell Genomic Signature: Identifying Targets for New Drug Development – *Amrie Grammer, PhD, BioSolutions LLC*

2:30 pm – 2:45 pm **Coffee Break**

2:45 pm – 3:15 pm New Insights into the Pathology of Human Type 1 Diabetes – *Matthias von Herrath, MD, La Jolla Institute for Allergy and Immunology*

3:15 pm – 4:00 pm Regulatory T Cells Need More Foxes than FOXP3 – *Jonathan Maltzman, MD, PhD, University of Pennsylvania*

4:00 pm – 4:45 pm Functional Dynamics of Human FOXP3+ Regulatory T Cells in Health and Disease – *Ciriaco Piccirillo, PhD, McGill University*

4:45 pm – 5:00 pm Question and Answer Forum

Sapphire 410



5:30 pm – 6:15 pm **Opening Keynote Address** – Chair: Robert Nussenblatt, MD, National Eye Institute
Using Advanced Imaging to Better Understand Host Defense and Control of Autoimmunity – *Ron Germain, MD, PhD, National Institutes of Health*

Sapphire CDGH

6:15 pm – 8:15 pm **Opening Reception** (includes Exhibits & Poster Sessions with authors present)

Sapphire ABEF

Thursday, June 25th

7:00 am – 5:30 am **Registration Open**

Sapphire West Foyer

7:30 am – 8:30 am **Morning Coffee**

Sapphire ABEF

Thursday, June 25th (cont.)

7:30 am – 6:15 am	Posters Available for Viewing (authors optional)	Sapphire ABEF
8:00 am – 9:30 am	Metabolism and the Immune System – Chair: Kevan Herold, MD, Yale University*	Sapphire CDGH
8:00 am – 8:30 am	Metabolic Determinants of Inflammasome Deactivation – Vishwa Dixit, DVM, PhD, Yale University*	
8:30 am – 9:00 am	Marching on its Stomach: T Cell Metabolism and the Antitumor Immune Response – Greg Delgoffe, PhD, University of Pittsburgh*	
9:00 am – 9:30 am	Differentiation of Memory T Cells – Ananda Goldrath, PhD, Johns Hopkins University	
9:30 am – 10:00 am	Networking Break	Sapphire ABEF
10:00 am – 11:30 am	Innate Sensing – Chair: Abul Abbas, MD, University of California, San Francisco*	Sapphire CDGH
10:00 am – 10:30 am	Nucleic Acid Detection in Host Defense and Autoimmunity – Dan Stetson, PhD, University of Washington*	
10:30 am – 11:00 am	Regulation of the Toll-like Receptor Pathway – Greg Barton, PhD, University of California, Berkeley	
11:00 am – 11:30 am	Consequences of Dendritic Cell Migration in Immunity – Stephanie Eisenbarth, MD, PhD, Yale University*	
11:30 am – 1:00 pm	Free Time for Lunch For available lunch programs, please see the Lunch & Learn schedule on page 16	
1:00 pm – 2:45 pm	The Role of Neutrophils – Chair: Matthew Albert, MD, PhD, Institut Pasteur*	Sapphire I
1:00 pm – 1:25 pm	Neutrophil Extracellular Traps in Infection and Immunity – Arturo Zychlinsky, PhD, Max Planck Institute for Infection Biology	
1:25 pm – 1:40 pm	Abstract Presentation: Down Regulation of Genes Related to Selenium Signaling Pathway in <i>in vitro</i> Transmigrated Neutrophils from Patients with Chronic Kidney Disease – Ladan Mansouri, PhD, Karolinska Institutet*	
1:40 pm – 2:05 pm	Novel Insights into the Role of Innate Immunity in Human SLE – Virginia Pascual, MD, Baylor Institute for Immunology Research	
2:05 pm – 2:20 pm	Abstract Presentation: Increased Survival and Exocytosis of Toxic Primary Granules by Neutrophils in an <i>in vitro</i> Model of Cystic Fibrosis Airway Disease – Osric Forrest, Emory University*	
2:20 pm – 2:45 pm	Role of Neutrophils in Sterile Injury and Infections – Paul Kubes, PhD, University of Calgary	
1:00 pm – 2:45 pm	The Best of Rheumatology 2015 – Chairs: Bill Robinson, MD, PhD, Stanford University* and Tim Niewold, MD, Mayo Clinic*	Sapphire L
1:00 pm – 1:25 pm	Neutrophils in the Pathogenesis of Systemic Autoimmune Diseases – Mariana Kaplan, MD, National Institutes of Health	
1:25 pm – 1:40 pm	Abstract Presentation: Estrogen-Mediated TLR8 Expression via STAT1 Facilitates Endogenous miRokine Ligand Activation by Exosomes Containing miR-21: A Novel Innate Inflammatory Pathway in Systemic Lupus Erythematosus – Nicholas Young, PhD, Ohio State University	
1:40 pm – 2:05 pm	Innate Immune Response to UV Light in Normals and Lupus – Keith Elkon, MD, University of Washington*	
2:05 pm – 2:20 pm	Abstract Presentation: Baseline Serum Interferon Beta/Alpha Ratio Predicts Response to Tumor Necrosis Factor Alpha Inhibition in Rheumatoid Arthritis – Theresa Wampler Muskardin, MD, Mayo Clinic*	
2:20 pm – 2:25 pm	Characterizing the Molecular Origins of Human Rheumatoid Arthritis – Michael Holers, MD, University of Colorado, Denver*	
1:00 pm – 2:45 pm	The Best of Transplantation 2015 – Chairs: Megan Sykes, MD, Columbia University* and Robert Lechler, FRC, King's College London*	Sapphire P
1:00 pm – 1:25 pm	The Impact of Microbiota on Alloimmune Responses – Maria-Luisa Alegre, MD, PhD, University of Chicago*	
1:25 pm – 1:40 pm	Abstract Presentation: Evolution of Innate and Adaptive Cytokine Responses in Ischemia Reperfusion Injury in Orthotopic Liver Transplantation – Ping Rao, PhD, University of California, Los Angeles*	

*FOCIS Center of Excellence

Thursday, June 25th (cont.)

1:40 pm – 2:05 pm	Optimizing the Use of nTregs to Promote Transplantation Tolerance – <i>Robert Lechler, FKC, King's College London*</i>	
2:05 pm – 2:20 pm	Abstract Presentation: IL-10 Engineered Human CD4+ Tr1 Cells Kill Leukemic Cells and Protect from Graft-Versus-Host Defense – <i>Silvia Gregori, PhD, San Raffaele Scientific Institute</i>	
2:20 pm – 2:45 pm	Tracking Alloreactive T Cell Receptors: A Window into Tolerance and Rejection – <i>Megan Sykes, MD, Columbia University*</i>	
2:45 pm – 3:15 pm	Networking Break	Sapphire ABEF
3:15 pm – 5:15 pm	Oral Abstract Session: “Help, Help Me Rhonda” Tfh Cells and Humoral Immunity (No CME) – <i>Chair: Terri Laufer, MD, University of Pennsylvania*</i>	Sapphire I
3:15 pm – 3:30 pm	Induction of Blood ICOS+ PD1+ CXCR3+ Memory Tfh Cells is Associated with Antibody Affinity – <i>Salah-Eddine Bentebibel, Baylor University*</i>	
3:30 pm – 3:45 pm	ROCK2 Signaling is Required for the Development and Function of T Follicular Helper Cells in SLE – <i>Jonathan Weiss, PhD, Kadmon Research Institute</i>	
3:45 pm – 4:00 pm	Novel Roles for STAT3 in Follicular Helper T Cell Function – <i>Hao Wu, Indiana University</i>	
4:00 pm – 4:15 pm	Development of a Plasma Biomarker of Germinal Center Activity for Human Vaccine Trials – <i>Colin Haveran-Daughton, La Jolla Institute for Allergy and Immunology</i>	
4:15 pm – 4:30 pm	Antibodies Induced by Peanut Oral Immunotherapy Suppress Heterologous IgE-Mediated Degranulation when Expressed as IgG4 – <i>Johanna Steinbrecher, Massachusetts General Hospital*</i>	
4:30 pm – 4:45 pm	Sequencing Anti-citrullinated Protein Antibody Repertoires in Rheumatoid Arthritis – <i>Sarah Kongpachith, Stanford University*</i>	
4:45 pm – 5:00 pm	IL-6 Signal Blockade May Suppress Plasmablast-Mediated Inflammation in Multiple Sclerosis Through Skewing its Differentiating Pathways – <i>Masakazu Nakamura, MD, PhD, National Institute of Neuroscience</i>	
5:00 pm – 5:15 pm	The Frequency of Follicular Helper and Regulatory T Cells Correlates with Progression to Type 1 Diabetes in Humans and Non-obese Diabetic Mice – <i>Georgia Foustari, PhD, San Raffaele Diabetes Research Institute</i>	
3:15 pm – 5:15 pm	Oral Abstract Session: “God Only Knows” Mechanisms of Autoimmunity (No CME) – <i>Chair: Ciriaco Piccirillo, PhD, McGill University*</i>	Sapphire L
3:15 pm – 3:30 pm	Distinct Inflammatory Profiles of Myelin-reactive T Cells from Patients with Multiple Sclerosis – <i>Yonghao Cao, PhD, Yale University*</i>	
3:30 pm – 3:45 pm	Genetic Regulation of NFkB in Autoimmune Disease – <i>William Housley, PhD, Yale University*</i>	
3:45 pm – 4:00 pm	Neuroprotective Effects of IL-22 During CNS Inflammation – <i>Rachel Caspi, PhD, National Institutes of Health</i>	
4:00 pm – 4:15 pm	Human Type 1 Innate Lymphoid Cells Accumulate in the Inflamed Synovium in Spondyloarthritis – <i>Nataliya Yermenko, PhD, University of Amsterdam*</i>	
4:15 pm – 4:30 pm	Pro-Growth/Survival Effect of IL9 Breaks Peripheral Immune Tolerance in Psoriasis and Psoriatic Arthritis – <i>Siba Raychaudhuri, MD, University of California, Davis</i>	
4:30 pm – 4:45 pm	Mitochondrial ROS Generates NETs Enriched in Oxidized Interferogenic Mitochondrial DNA – <i>Christian Lood, PhD, University of Washington*</i>	
4:45 pm – 5:00 pm	Integrated, Multi-cohort Analysis of Systemic Lupus Erythematosus Identifies Clinically Relevant, Interferon-independent Disease Signature – <i>Winston Haynes, Stanford University*</i>	
5:00 pm – 5:15 pm	CD8+ PD1+ T Cells Enriched at the Site of Chronic Autoimmune Inflammation Show Exhaustion Signature – <i>Alessandra Petrelli, MD, UMC Utrecht*</i>	
3:15 pm – 5:15 pm	Oral Abstract Session: “Good Vibrations” of Innate Sensing and Immunity (No CME) – <i>Chair: Jordan Pober, MD, Yale University*</i>	Sapphire P
3:15 pm – 3:30 pm	A Microbiome-associated Lipid as an Immunoregulator in Multiple Sclerosis – <i>Emily Anstadt, University of Connecticut</i>	

Thursday, June 25th (cont.)

3:30 pm – 3:45 pm	Soluble CD52 is a Potential Therapeutic for Inflammatory Diseases – <i>Maryam Rashidi, MD, Walter & Eliza Hall Institute</i>
3:45 pm – 4:00 pm	Oral Challenge with Wild-type Salmonella Typhi Induces Activation of Circulating Monocytes and Dendritic Cells in Individuals Who Develop Typhoid Disease – <i>Franklin Toapanta, MD, PhD, University of Maryland</i>
4:00 pm – 4:15 pm	Ly9 (CD229) Functions as a Regulator Controlling Innate B Cell Homeostasis and Antibody Responses – <i>Pablo Engel, MD, PhD, University of Barcelona*</i>
4:15 pm – 4:30 pm	Self-glycerophospholipids Regulate Immune Response and Inflammation via Induction of ‘Anti-inflammatory’ Myeloid-derived Suppressor Cells – <i>Ram Singh, MD, University of California, Los Angeles*</i>
4:30 pm – 4:45 pm	IL-7 Enhances NK Cell Activation and Effector Function and NK Cell IL-7 Receptor Alpha Chain (CD127) Expression is Negatively Associated with HCV Level During Chronic HCV Infection – <i>Chelsey Judge, PhD, Case Western Reserve University</i>
4:45 pm – 5:00 pm	Emerging Role of Innate Lymphocytes in Allergic Inflammation in Murine Model of Leaky Scid/Omenn Syndrome – <i>Krisztian Csomos, PhD, Harvard University</i>
5:00 pm – 5:15 pm	The Role of XIAP in BCL10-mediated Dectin-1 Signaling – <i>Wan-Chen Hsieh, PhD, National Defense Medical College</i>

3:15 pm – 5:15 pm	Principles of Flow Cytometry for Immune Monitoring Course: Multiplexed Immunoassays (No CME)	Sapphire 410
3:15 pm – 4:15 pm	Overview of the Luminex Platform – <i>Phil McCoy, PhD, National Institutes of Health</i>	
4:15 pm – 5:15 pm	Standardization of Other Platforms – <i>Holden Maecker, PhD, Stanford University*</i>	

5:30 pm – 6:15 pm	Keynote Address – <i>Chair: Mark Anderson, MD, PhD, University of California, San Francisco*</i> TET Methyl Cytosine Oxidases in T Regulatory Function and Cancer – <i>Anjana Rao, PhD, La Jolla Institute for Allergy & Immunology</i>	Sapphire CDGH
-------------------	---	----------------------

6:15 pm – 7:30 pm	Exhibits and Poster Session (authors present)	Sapphire ABEF
7:30 pm – 8:30 pm	FOCIS Members Reception (FOCIS members only)	Pool Club

Friday, June 26th

7:00 am – 5:30 pm	Registration Open	Sapphire West Foyer
7:30 am – 8:30 am	Morning Coffee	Sapphire West Foyer
7:30 am – 6:15 pm	Posters Available for Viewing (authors optional)	Sapphire ABEF
8:00 am – 9:30 am 8:00 am – 8:30 am	Innate Lymphoid Cells – <i>Chair: Daniel Rotrosen, MD, National Institutes of Health</i> Group 2 Innate Lymphoid Cells in Health and Disease – <i>Jennifer Walker, PhD, University of Cambridge*</i>	Sapphire CDGH
8:30 am – 9:00 am 9:00 am – 9:30 am	Immune Regulation at Barrier Surfaces – <i>David Artis, PhD, University of Pennsylvania*</i> Innate Lymphoid Cells in Immunity – <i>Marco Colonna, MD, Washington University*</i>	
9:30 am – 10:00 am	Networking Break	Sapphire ABEF
10:00 am – 11:30 am 10:00 am – 10:30 am	Cutting Edge Technology – <i>Chair: David Hafler, MD, Yale University*</i> Multiparameter Single Cell Deep Phenotypic and Genotypic Profiling for Studies of Inflammatory Processes – <i>Garry Nolan, PhD, Stanford University*</i>	Sapphire CDGH

*FOCIS Center of Excellence

Friday, June 26th (cont.)

10:30 am – 11:00 am	New Approaches to Visualizing Immune Cells – <i>Hidde Ploegh, PhD, Whitehead Institute of Biomedical Research</i>	
11:00 am – 11:30 am	NGS for Diagnosis of Critical Care Illness – <i>Joe DeRisi, PhD, University of California, San Francisco*</i>	
11:30 am – 1:00 pm	Free Time for Lunch <i>For available lunch programs, please see the Lunch & Learn schedule on page 16</i>	
1:00 pm – 2:45 pm	Microbiome & Host Defense – <i>Matthias von Herrath, MD, La Jolla Institute for Allergy & Immunology</i>	Sapphire I
1:00 pm – 1:25 pm	– <i>Michael Rosenblum, MD, PhD, University of California, San Francisco</i>	
1:25 pm – 1:40 pm	Abstract Presentation: Gut Flora Regulates T Cell Immune Responses in Humanized Mice – <i>Nalini Vudattu, PhD, Yale University*</i>	
1:40 pm – 2:05 pm	Assembly and Stability of the Human Microbiome – <i>Dave Relman, MD, Stanford University*</i>	
2:05 pm – 2:20 pm	Abstract Presentation: Dependence of Autoreactivity in Lupus-associated Antiphospholipid Syndrome on Gram-positive Gut Microbiota – <i>Silvio Manfredo Vieira, PhD, Yale University*</i>	
2:20 pm – 2:45 pm	Microbiota in Crohn's, Colitis and Other Inflammatory Gut Disorders – <i>Ramnik Xavier, MD, PhD, Massachusetts General Hospital*</i>	
1:00 pm – 2:45 pm	The Best of Allergy 2015 – <i>Chairs: Edward Knol, PhD, UMC Utrecht* and Lanny Rosenwasser, MD, University of Missouri</i>	Sapphire L
1:00 pm – 1:25 pm	From Biologics to Precision Medicine in Asthma Treatment – <i>Walter Canonica, MD, PhD, Genoa University</i>	
1:25 pm – 1:40 pm	Abstract Presentation: Critical Role of Eicosanoids in the Programming of Pulmonary NK Cells that Limit Allergic Inflammation – <i>Zeina Jaffar, PhD, University of Montana</i>	
1:40 pm – 2:05 pm	Why Blocking of IL-13 in Allergic Asthma Patients is Effective in Subgroups of Asthma Patients – <i>Jonathan Corren, MD, University of California, Los Angeles*</i>	
2:05 pm – 2:20 pm	Abstract Presentation: Cellular Stress Caused by Disturbed Lipid Metabolism in Fetal Skin Predisposes for Development of Allergic Disorders – <i>Denis Khnykin, PhD, University of Oslo*</i>	
2:20 pm – 2:45 pm	Insights from IgE Targeting in Chronic Urticaria – <i>Sarbjit Saini, MD, Johns Hopkins University</i>	
1:00 pm – 2:45 pm	The Best of Tumor Immunology 2015 – <i>Chairs: Francesco Marincola, MD, Sidra Medical Center and Barbara Seliger, PhD, Martin Luther University*</i>	Sapphire P
1:00 pm – 1:25 pm	Tumor Immune Escape through Subversion of Inflammation – <i>Caetano Reis e Sousa, PhD, London Research Institute</i>	
1:25 pm – 1:40 pm	Abstract Presentation: PD-1 Downstream Signaling Pathway in Activated CD8 T Cells Linked to Mitochondria Apoptosis Molecules as a Result of PD-1 and B7-H1 Interaction – <i>Haidong Dong, MD, Mayo Clinic*</i>	
1:40 pm – 2:05 pm	Immunologic Biomarkers in Cancer Clinical Trials – <i>Lisa Butterfield, PhD, University of Pittsburgh*</i>	
2:05 pm – 2:20 pm	Abstract Presentation: Photon Irradiation Enhances the Efficacy of Antigen-specific Vaccination in Experimental Glioma – <i>Martina Ott, PhD, German Cancer Research Center</i>	
2:20 pm – 2:45 pm	Genetically Modified T Cells for Cancer – <i>Marcela Maus, MD, PhD, University of Pennsylvania*</i>	
2:45 pm – 3:15 pm	Networking Break	Sapphire ABEF
3:15 pm – 5:15 pm	Oral Abstract Session: "California Dreamin" of Immunomodulation (No CME)	Sapphire I
	– <i>Chair: Jane Buckner, MD, Benaroya Research Institute*</i>	
3:15 pm – 3:31 pm	Early Consumption of Peanuts Prevents Peanut Allergy in High-Risk Infants – <i>Peter Sayre, MD, Immune Tolerance Network</i>	
3:31 pm – 3:44 pm	Creation and Function of Engineered Antigen-specific Human Regulatory T Cells for Autoimmunity: A Lesson from CAR Therapy for Cancer – <i>David Scott, PhD, Uniformed Services University</i>	

Friday, June 26th (cont.)


3:44 pm – 3:57 pm	Enhanced Mixed Hematopoietic Chimerism and Immune Tolerance in Monkeys after BMT Across MHC Barriers and Infusion of Polyclonal Recipient Tregs – <i>Raimon Duran-Struuck, DVM, PhD, Columbia University*</i>
3:57 pm – 4:10 pm	Characterization of Polyclonal and Antigen-specific CD4FOX3 T Cells for Treg Cell-based Immunotherapy of Autoimmune Diseases – <i>Laura Passerini, PhD, San Raffaele Scientific Institute</i>
4:10 pm – 4:23 pm	FoxP3+ Regulatory T Cells Use Heparanase to Access IL-2 in the Extracellular Matrix – <i>Hedwich Kuipers, PhD, Stanford University*</i>
4:23 pm – 4:36 pm	Modulating IL-2/IL-2R Interactions to Therapeutically Shift the Balance Between Regulatory T Cells and Effector Lymphocytes – <i>Marc Gavin, PhD, Amgen</i>
4:36 pm – 4:49 pm	Interacting Psoriasis Cytokine Pathways Differentially Modulated by Four Biological Therapeutics or Candidates – <i>Ajay Nirula, MD, PhD, Amgen</i>
4:49 pm – 5:02 pm	Inhibition of Naïve and Memory CD4+ Helper T Cells by Localized Skin Heme Oxygenase-1 Induction and Antigen Delivery in Mice and Non-human Primate – <i>Julien Pogu, MD, INSERM</i>
5:02 pm – 5:15 pm	Regulation of IL-10 Expression in Human Pro-inflammatory CD4+ T Cells in Response to TNF Blockade – <i>Ceri Roberts, King's College London*</i>

3:15pm–5:15pm	Oral Abstract Session: “Catch a Wave” of Big Data (No CME) – <i>Chair: Elaine Reed, PhD, University of California, Los Angeles*</i>	Sapphire L
3:15 pm – 3:30 pm	Autoantibody Profiling Using Autoantigen Microarrays Revealed Autoantibody Patterns Associated with Breach in Immune Tolerance and Disease Activity – <i>Quan-Zhen Li, MD, PhD, University of Texas Southwestern Medical Center*</i>	
3:30 pm – 3:45 pm	Complex Associations of T Cell Antigen Specificity and T Cell Exhaustion in Chronic HBV Infection – <i>Yang Cheng, PhD, Singapore Immunology Network</i>	
3:45 pm – 4:00 pm	<i>Ex vivo</i> Characterization of CD4 Responses Against the Seasonal Influenza Vaccine Using a Novel Multiplexed HLA Class II Tetramer Staining – <i>Hannes Uchtenhagen, PhD, Benaroya Research Institute*</i>	
4:00 pm – 4:15 pm	A Multidimensional Immunomics Approach Identifies an Immune Signature Possibly Relevant in Systemic Sclerosis Pathogenesis – <i>Hari Balaji Venkatanarayanan, PhD, Duke National University Singapore</i>	
4:15 pm – 4:30 pm	Genetically-guided Bioassays Reveal Distinct Immune Profiles in Subjects with Inflammatory Bowel Disease (IBD) Compared to Controls – <i>Sabine Ivison, PhD, University of British Columbia*</i>	
4:30 pm – 4:45 pm	Effect of Mass Drug Administration with Praziquantel on Anti-schistosome Immune Responses in School Children from Western Kenya – <i>Eric Ndombi, MSc, Kenyatta University</i>	
4:45 pm – 5:00 pm	Epigenetic Traits Correlated to Clinical Activity in Juvenile Idiopathic Arthritis – <i>Maura Rossetti, PhD, SingHealth Translational Immunology and Inflammation Centre</i>	
5:00 pm – 5:15 pm	Mixed Chimerism and Two Way Alloimmune Responses in Human Intestinal Allografts – <i>Julien Zuber, MD, PhD, Columbia University*</i>	

3:15pm–5:15pm	Oral Abstract Session: Development and Aging “Be True to Your School” (No CME) – <i>Chair: Francesco Marincola, MD, Sidra Medical Center*</i>	Sapphire P
3:15 pm – 3:30 pm	Human Naïve T Cell Compartment Revisited: Neonatal Thymectomy Alters Phenotype and Function of Peripheral Naïve T Cells – <i>Theo van den Broek, MD, UMC Utrecht*</i>	
3:30 pm – 3:45 pm	Human T Cell Subset Compartmentalization and Repertoire Maintenance Over Life – <i>Joseph Thome, Columbia University*</i>	
3:45 pm – 4:00 pm	Contributors to Decreased Vaccine Response in the Elderly – <i>Bonnie Blomberg, PhD, University of Miami*</i>	
4:00 pm – 4:15 pm	Non-coding RNAs Regulate Thymic T Cell Output Under Normal and Pathophysiological Settings – <i>Nicole Van Oers, PhD, University of Texas Southwestern Medical Center*</i>	
4:15 pm – 4:30 pm	Single-cell, 42-Plex Cytokine Profiling Reveals Deep Functional Heterogeneity in Normal Immune Defense and Autoimmune Pathogenesis – <i>Fan Rong, PhD, Yale University*</i>	

*FOCIS Center of Excellence

Friday, June 26th (cont.)

4:30 pm – 4:45 pm	Dendritic Cells and Bronchial Epithelial Cell Interaction in the Elderly – <i>Anshu Agrawal, PhD, University of California, Irvine</i>	
4:45 pm – 5:00 pm	A Defect in a Small-intestinal Lymphoid Structure Affects Colonic B Cell Development – <i>Neeraj Surana, MD, PhD, Harvard University</i>	
5:00 pm – 5:15 pm	Sustained Glycolytic Switch Required for Rapid Effector Function of TEMRA CD8 T Cells in Healthy Volunteers and in Immune-stimulated Patients – <i>Michelle Yap, INSERM</i>	
3:15 pm – 5:15 pm 3:15 pm – 4:15 pm 4:15 pm – 5:15 pm	Principles of Flow Cytometry for Immune Monitoring Course: Panel Design (No CME) Sapphire 410 Panel Design for High-D Flow Cytometry – <i>Phil McCoy, PhD, National Institutes of Health</i> CyTOF Panel Design and Standardized Panels – <i>Holden Maecker, PhD, Stanford University*</i>	
5:30 pm – 6:15 pm	Robert A. Good Memorial Keynote Address – Chair: <i>Gerald Nepom, MD, PhD, Benaroya Research Institute</i> The Winding Road of CD28 from Tconvs to Tregs – <i>Jeffrey Bluestone, PhD, University of California, San Francisco*</i>	Sapphire CDGH 
6:15 pm – 7:30 pm	Exhibits and Poster Session (authors present)	Sapphire ABEF

Saturday, June 27th

7:30 am – 8:30 am	Morning Break	Sapphire West Foyer
8:00 am – 8:10 am	State of FOCIS Address	Sapphire West Foyer
8:10 am – 8:30 am	Presidential Lecture – <i>Robert Nussenblatt, MD, National Eye Institute</i>	Sapphire CDGH
8:30 am – 10:00 am 8:30 am – 9:00 am 9:00 am – 9:30 am 9:30 am – 10:00 am	Effector & Regulatory Functions of B Cells – Chair: <i>David Rawlings, MD, Seattle Children's Hospital</i> Spontaneous B Cell Class Switching in the Thymus and Tolerance – <i>Haochu Huang, PhD, University of Chicago*</i> B Cells in Autoimmunity – <i>Eric Meffre, PhD, Yale University*</i> Regulatory B10 Cells in Health and Disease – <i>Tom Tedder, PhD, Duke University*</i>	Sapphire CDGH
10:00 am – 10:30 am	Networking Break	Sapphire West Foyer
10:30 am – 12:00 pm 10:30 am – 11:00 am 11:00 am – 11:30 am 11:30 am – 12:00 pm	Cell Stress – Chair: <i>Frank Nestle, MD, King's College London*</i> Autophagy in Immunity and Inflammation – <i>Vojo Deretic, PhD, University of New Mexico</i> Whole Exome Sequencing Identifies Novel Molecular Links between ER Stress and Autoimmune Disease – <i>Anthony Shum, MD, University of California, San Francisco*</i> Macroautophagy in MHC Restricted Antigen Presentation and Viral Immune Escape – <i>Christian Munz, PhD, University of Zurich</i>	Sapphire CDGH

*FOCIS Center of Excellence

Lunch & Learn Schedule



Thursday, June 25th

11:45 am – 1:00 pm

Flow Jo Industry Tutorial – Jack Panopoulos, PhD, FlowJo

CFR, FDA, and FJE: Flow Cytometry Analysis and Interpretation in the Clinical Environment

This tutorial will provide a demonstration of how FlowJo Enterprise (FJE) can be used to initiate and maintain a 21 CFR part 11 compliant workflow. The tutorial will begin by providing an overview of the regulatory environment as it applies to flow cytometry data analysis and tools. The discussion will lead into a proof-of concept mechanism for standardizing and validating an analysis workflow, and demonstrate FJE's audit trail tools for making 21 CFR part 11 compliance easy.

Sapphire P



11:45 am – 1:00 pm

BD Biosciences Industry Tutorial – Peter Krutzik, PhD, Primity Bio

High-Dimensional Cell Analysis: Single-Cell Maps of Intracellular Signaling Cascades and Cell Surface Phenotypes

Cell surface antigen staining continues to be the staple of modern flow cytometry. However, alternate methods of cellular characterization such as intracellular antigen staining and phospho flow have recently become powerful tools for in-depth functional characterization of single cells. Here, we demonstrate the potential of combining these technologies into broad profiling panels of the cell surface and intracellular space to deliver novel insights into disease states, drivers of oncogenesis, and biomarker detection. We first created a quantitative map of normal healthy donors across more than 400 cell surface markers and 100 intracellular signaling nodes. This map was used as the basis for determining the aberrant expression and signaling in several disease model cell lines and primary patient samples to probe the relevance of the cellular models, and classify patient cellular phenotypes with unprecedented resolution.

Sapphire L



11:45 am – 1:00 pm

Myriad RBM Industry Tutorial

– Matthew Albert, MD, PhD, Institut Pasteur, Ralph L. McDade, PhD, Myriad RBM

Standardized Whole Blood Assays for Monitoring Functional Immune Responses

Exciting progress has been made in the standardization of assays for personalized immune response monitoring. Attend this workshop to learn about innovative research that demonstrates how a suite of whole blood, syringe-based assay systems can be used to reproducibly assess induced innate or adaptive immune responses.

Sapphire I



11:45 am – 1:00 pm

How to Get Published

A roundtable discussion featuring editors from renowned medical publications giving tips and tricks on how to get your research published.

Sapphire 411

Friday, June 26th

11:45 am – 1:00 pm

Preparation and Review of your NIH Grant Application

An overview of grant application preparation and peer review at the NIH for investigators at all levels, but especially relevant for junior investigators.

Sapphire 411

11:45 am – 1:00 pm

Women in Transplantation

Join Members of the Women in Transplantation Steering Committee and a panel of speakers as we discuss the challenges of career development and the importance of mentorship in your career at this lunch time networking event. This event is open to all attendees registered to attend FOCIS 2015 and lunch will be served."

Sapphire 410

Speaker, Organizer and Contributor Disclosure Index

The following presenters have indicated a relationship in which the context of their presentations could be perceived by some as a real or apparent conflict of interest, but do not consider that it will influence their presentations. If a presenter is not listed, he or she had no relationship to disclose. The number following each company name represents the specific relationship from the key below.

Key: 1 – Consultant / Advisor; 2 – Employee; 3 – Lecture Fees; 4 – Equity / Owner; 5 – Patents/Royalty; 6 – Grant Support

Bluestone, Jeffrey: Athelos/Neostem/PCT⁶, Becton Dickinson⁶, Juno Therapeutics⁶, Pfizer CTI⁶
 Butterfield, Lisa: Astellas¹, NeoStem¹
 Canonica, G. Walter: Alk-Abello^{1, 3}, Allergopharma^{1, 3}, Allergy Therapeutics^{1, 3}, Lofarma^{1, 3}, Stallergenes^{1, 3}, Thermo Fisher^{1, 3}, GSK^{1, 3}, Novartis^{1, 3}, Astra Zeneca^{1, 3}, Mundipharma^{1, 3}, Alimira^{1, 3}, Chiesi Farmaceutici^{1, 3}
 Corren, Jonathan: Genentech^{3, 6}, Novartis¹, Merck^{1, 3, 6}, Pearl Therapeutics⁶, Sanofi⁶, TEVA³
 Haffelr, David: Genzyme¹, Sanofi-Aventis¹, McKinsey & Company¹, NKT Therapeutics¹, Sage Therapeutics¹, The Cleveland Clinic¹
 Maus, Marcela: Novartis¹
 Nestle, Frank: Janssen¹, Pfizer¹, Celgene¹, Sanofi¹, Lilly¹, GSK¹, Novartis¹, Amgen¹
 Nolan, Garry: FLuidigm^{1, 4}
 Pascual, Virginia: Neovacs¹, Novartis⁵
 Ploegh, Hidde: 121 Bio⁴, J&J¹, Novartis Venture Funds¹
 Poher, Jordan: Abbvie^{1, 6}, Alexion^{1, 6}, ISIS Pharma¹
 Reed, Elaine: Pfizer⁶, Immucor⁶, Novartis⁶, TrueNorth⁶
 Robinson, William: Atreca^{1, 4, 5}, Novimmune¹, Takeda¹, BMS¹
 Saini, Sarbjit: Genentech¹, Novartis⁶
 Seliger, Barbara: Bristol-Myers-Squibb⁶
 von Herrath, Matthias: Novo Nordisk²

FOCIS Centers of Excellence (FCE)



The FOCIS Centers of Excellence (FCE) provide an opportunity to build an interdisciplinary translational immunology community at your institution. Being a member of the FCE community offers an effective training environment for translational researchers and clinicians by promoting interdisciplinary innovation in research and clinical practices, and promoting new links for researchers and clinicians.

C. Garrison Fathman Fellows Fund



Congratulations!

Kathrin Schumann, PhD, University of California, San Francisco

Winner of the third annual C. Garrison Fathman Fellows Fund Trainee Travel Award! The C. Garrison Fathman Fellows Fund was established to enable trainees and fellows to attend FOCIS Annual Meetings, and educational courses, and to participate in exchange programs that advance human health through immunology.

Your contribution supports trainees and fellows throughout immunology. Donate online at www.focisnet.org or by calling (414) 359-1670, extension 1103.



We united representatives from academic centers, industry and government to build and test a standardized panel for immune assessment that will be used to create a standardized trial network of interdisciplinary immunology centers.



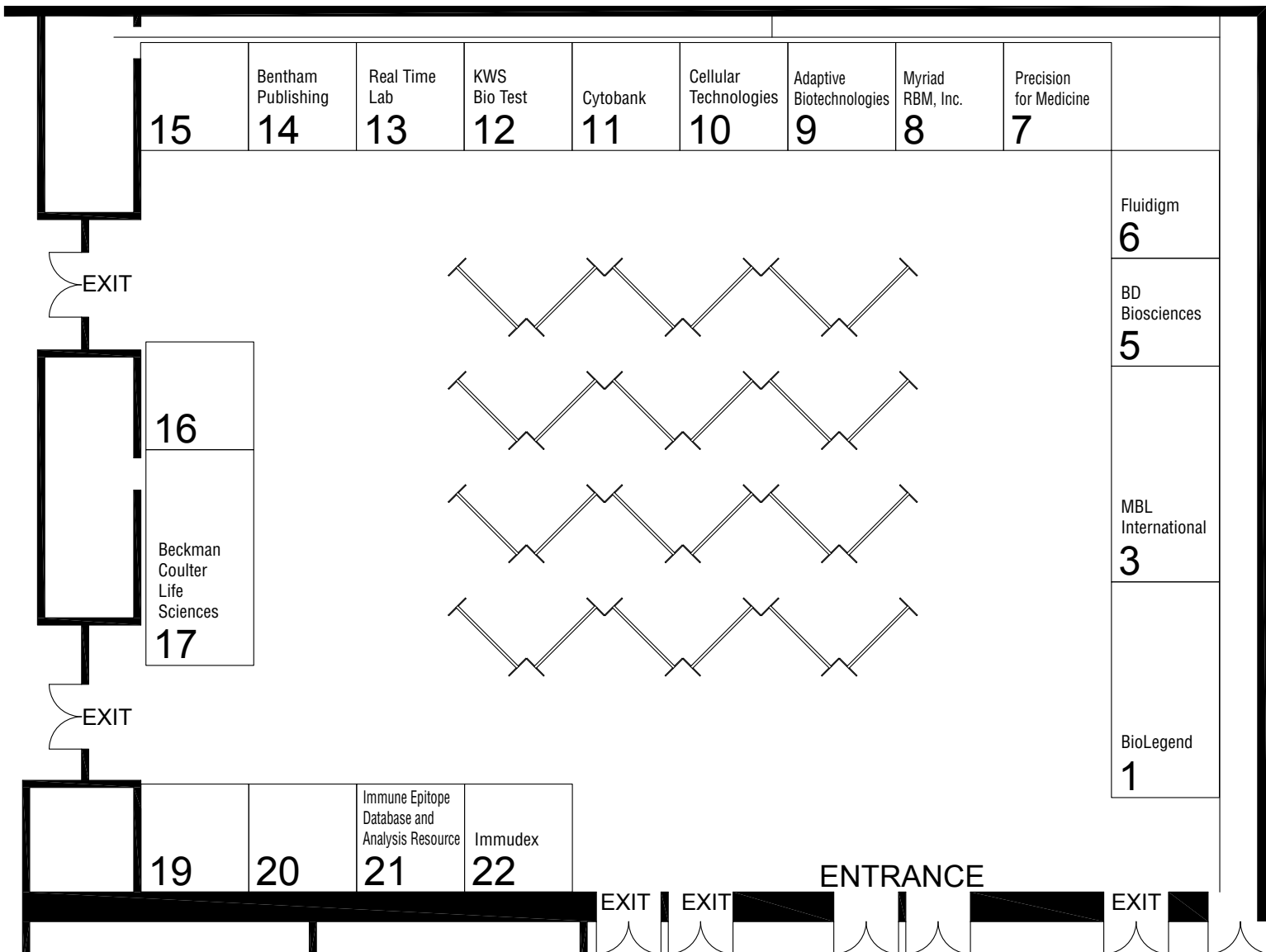
When your forums and collaborators are integral to the success of standardizing immune assessment, there's no need to shout about it. Standardized practice begins at your institution and is elevated by participation in a network of centers with the same goal.

The FOCIS Centers of Excellence, helping you decrease the time and distance between bench and bedside.

focisnet.org

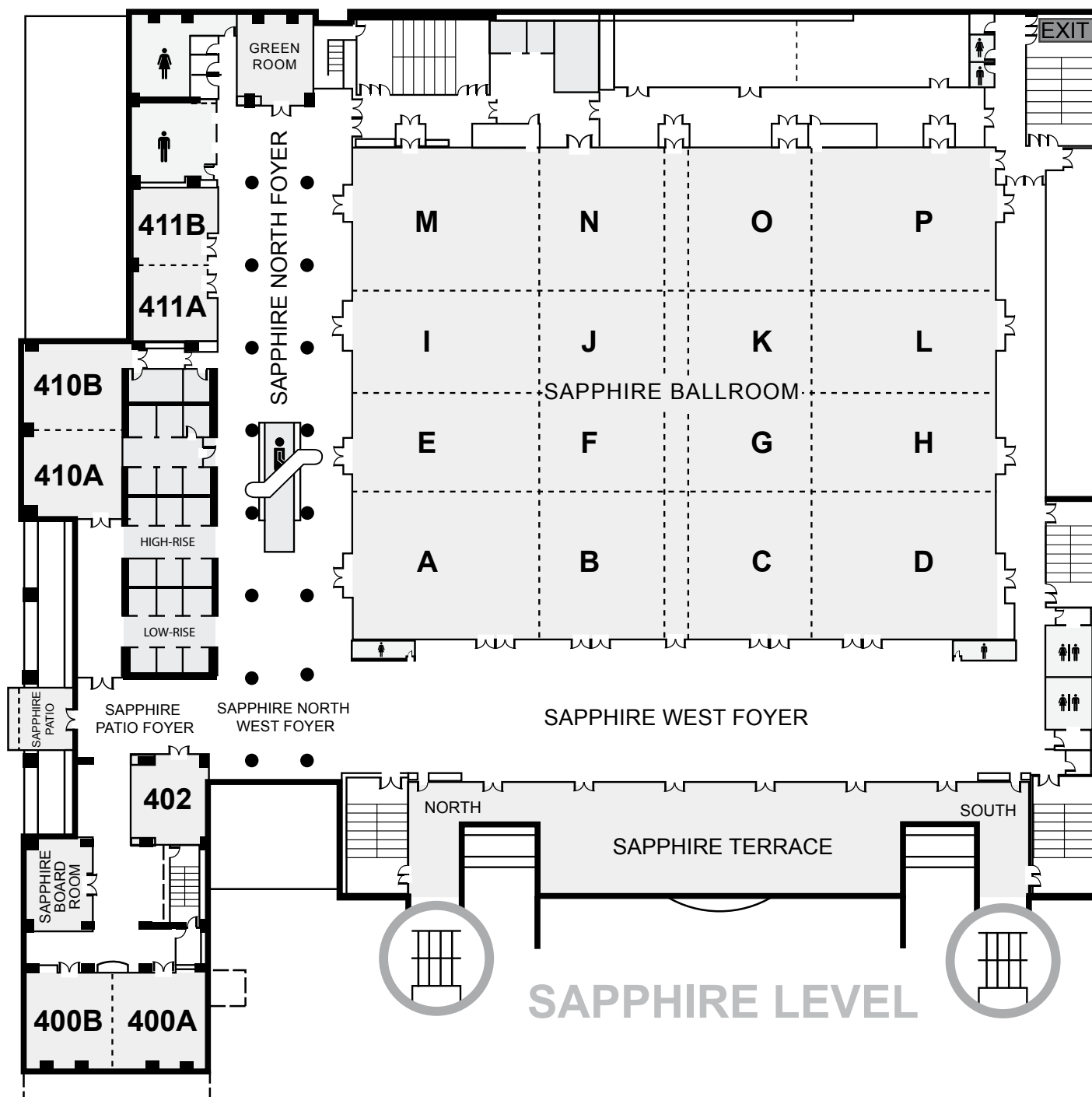
Exhibitor Listing and Floor Plans

Organization	Booth	Organization	Booth
Adaptive Biotechnologies	9	Immudex	22
BD Biosciences	5	MBL International	3
Beckman Coulter Life Sciences	17	Myriad RBM, Inc.	8
Bentham Publishing	14	Precision for Medicine	7
BioLegend	1	Immune Epitope Database and Analysis Resource	21
Cellular Technologies	10	KWS Bio Test	12
Cytobank	11	Real Time Lab	13
Fluidigm	6		



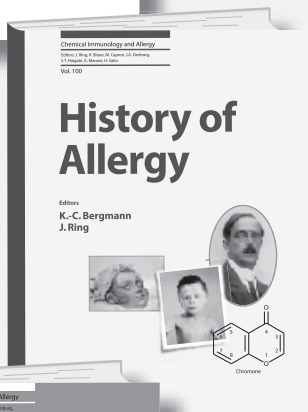
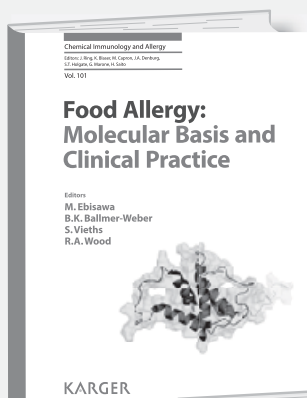
**HILTON SAN DIEGO BAYFRONT
SAPPHIRE BALLROOM -A,B,E&F
SAN DIEGO, CA**





SAPPHIRE LEVEL

Recent Titles in Allergy/Immunology



Chemical Immunology and Allergy, Vol. 101

Food Allergy: Molecular Basis and Clinical Practice

Editors: Ebisawa M. (Sagamihara);
Ballmer-Weber B.K. (Zurich); Vieths S. (Langen);
Wood R.A. (Baltimore, Md.)
XVI + 278 p., 19 fig., 4 in color, 56 tab.,
hard cover, 2015
CHF 196.00 / EUR 163.00 / USD 231.00
ISBN 978-3-318-02340-4

Chemical Immunology and Allergy, Vol. 100

History of Allergy

Editors: Bergmann K.-C. (Berlin); Ring J. (Munich)
XX + 426 p., 257 fig., 127 in color, 20 tab.,
hard cover, 2014
CHF 115.00 / EUR 96.00 / USD 135.00
ISBN 978-3-318-02194-3

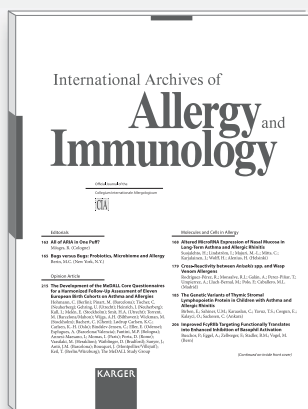
Chemical Immunology and Allergy, Vol. 99

Angiogenesis, Lymphangiogenesis and Clinical Implications

Editors: Marone G. (Naples); Granata F. (Naples)
XII + 232 p., 26 fig., 14 in color, 8 tab.,
hard cover, 2014
CHF 188.00 / EUR 157.00 / USD 221.00
ISBN 978-3-318-02480-7



For more information visit:
www.karger.com/chial



A key journal in the field:

International Archives
of Allergy and Immunology

Editors-in-Chief: R. Valenta, B. Bohle (Vienna)

*The international forum for high-quality, innovative research in allergy
and immunology since 1950*

For more information visit:
www.karger.com

KARGER 125 YEARS

KI15401

We provided the internationally recognized designation that contributed to an independent immunology center gaining additional space, resources and a tremendous opportunity to grow and fundraise as a university partner.



When your designation and structure are integral to the success of independent centers receiving university recognition and benefits, there's no need to shout about it. The spread of interdisciplinary immunology begins at your institution and is elevated by participation in a network of centers with the same goal. The FOCIS Centers of Excellence, helping you create pathways for improved understanding of the pivotal role of immune mechanisms in disease.

focisnet.org

SAVE THE DATE

JUNE 22 - 25, 2016

BOSTON FOCiS 2016



JUNE 22 - 25, 2016 SEAPORT HOTEL AND WORLD TRADE CENTER



FOCIS 2015 Attendees: Visit us at Booth #1

MojoSort™

Magnetic Cell Separation System

The MojoSort™ Magnetic Cell Separation System is designed for the separation of target populations using positive or negative selection. MojoSort™ nanoparticles deliver excellent purity and yield at an unmatched, affordable price. Magnetically sorted cells can be used for multiple downstream applications.

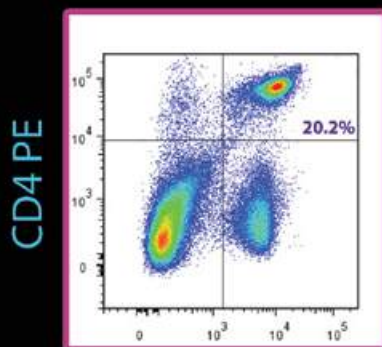
MojoSort™ advantages:

- Small and large test size formats to meet research needs
- Robust performance
- Preserved cell functionality after sorting
- Excellent price

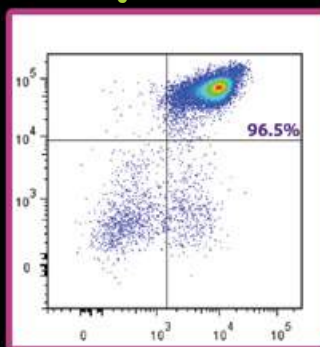


Add some Mojo to your experiment and explore the possibilities!

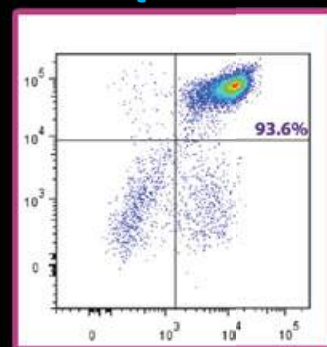
Before Isolation



After MojoSort™ Isolation



After Competitor Isolation



A suspension of single cells from pooled C57BL/6 mouse spleen and lymph nodes was prepared to isolate CD4⁺ T cells using the MojoSort™ Mouse CD4 T Cell Isolation Kit. Cells were stained with PE anti-mouse CD4 (clone RM4-4), APC anti-mouse CD3e (145-2C11), and 7-AAD. Grateful Dead cells were excluded from the analysis.

To learn more, visit: biolegend.com/mojosort



BioLegend is ISO 9001:2008 and ISO 13485:2003 Certified

Toll-Free Tel: (US & Canada): 1.877.BIOLEGEND (246.5343)
Tel: 858.768.5800
biolegend.com

08-0052-11

World-Class Quality | Superior Customer Support | Outstanding Value